

Step 1. Click the **"start"** menu on the Windows tool bar and click on the **"Printers and Faxes"** command to start the setup.



Step 2. Select **"Add a printer"** to go to next step.



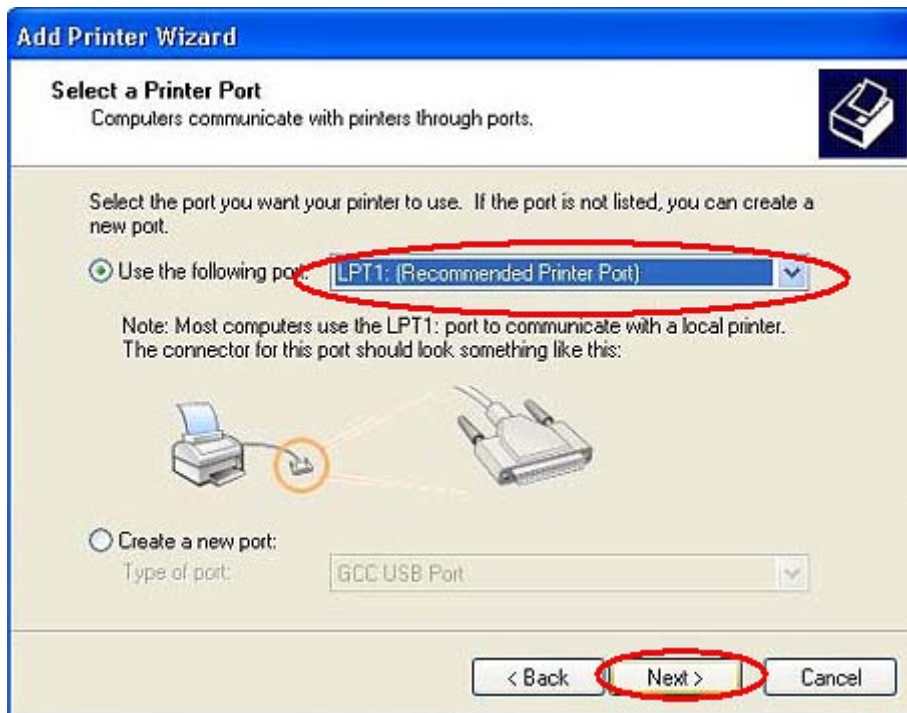
Step 3. Once you see the "Add Printer Wizard" as the screen, click "Next" to proceed. You will be guided through each step of the installation process.



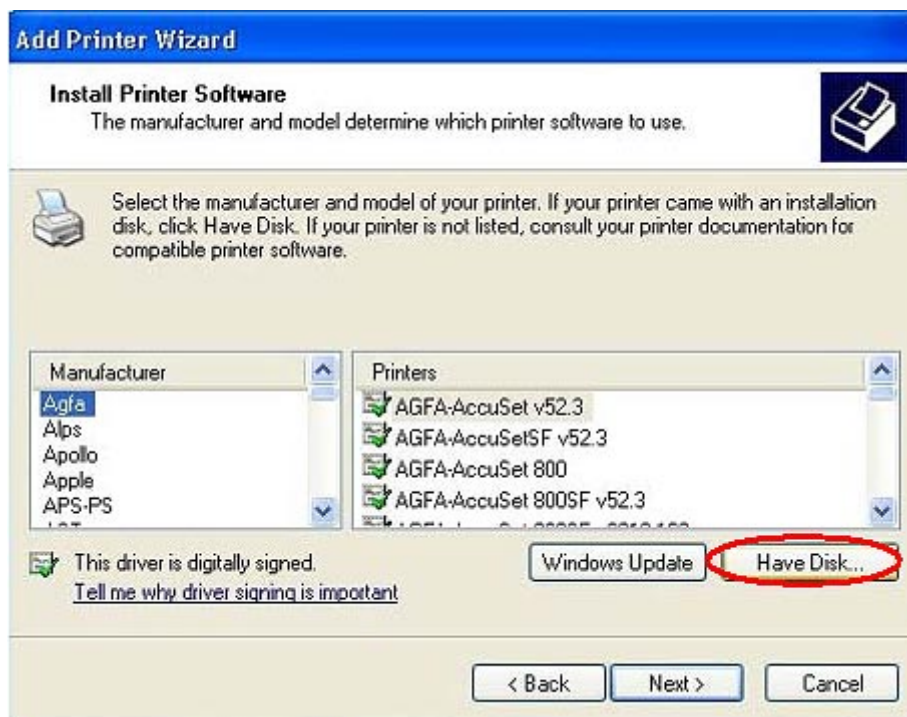
Step 4. Select "Local printer attached to this computer" option. Then, click "Next" to go to next step.



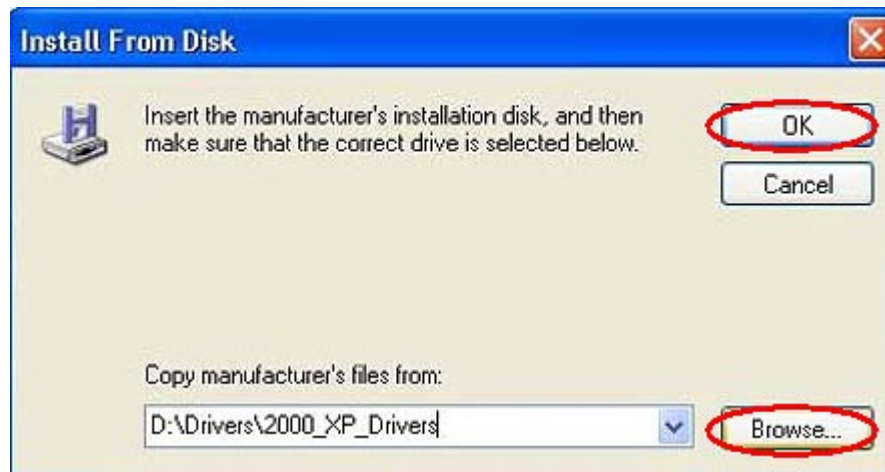
Step 5. Select "LPT1" as the printer Port then click "Next".



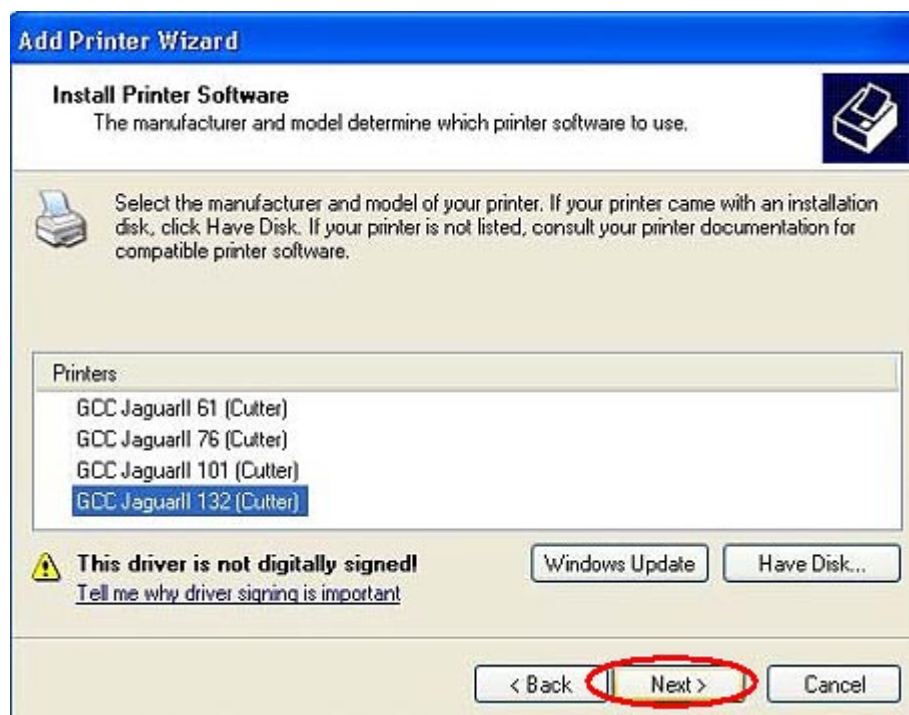
Step 6. Click "Have Disk" to proceed to the next step.



Step 7. Click "**Browse**" and select a suitable Driver version for your specific Windows operating system from your GCC CD-ROM disk. Then, click "**OK**" to move on to the next step.



Step 8. Select the model of cutting plotter you are installing. Then, click "**Next**" to go to next step. (Note: If you are installing a new GCC cutting plotter, please go to the Step 9-1, otherwise please skip to Step 9-2.)

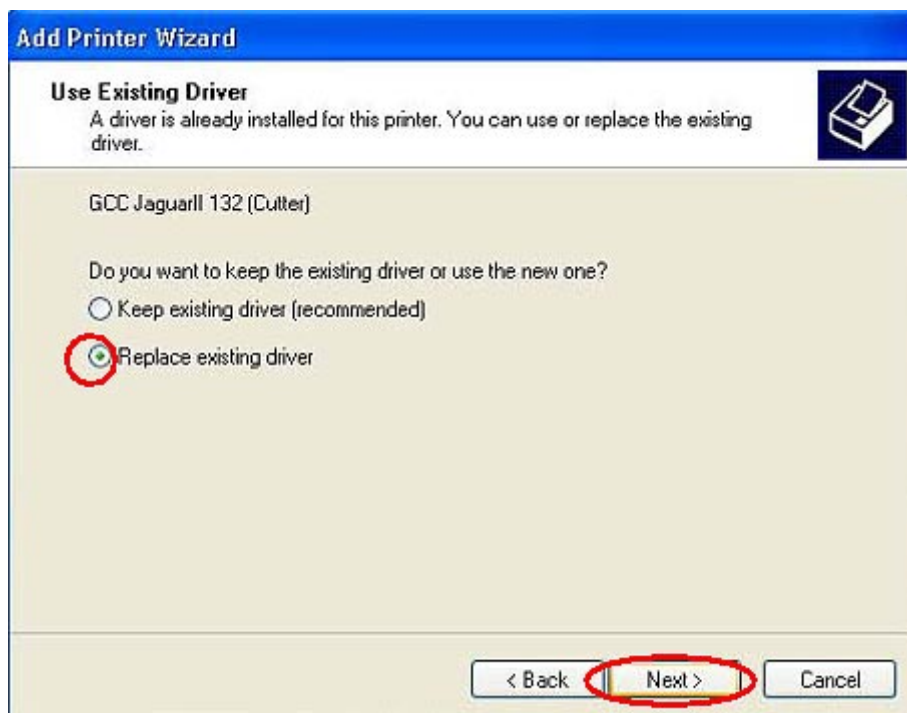


Step 9-1. You can use the default name or specify a new name a new for your cutter. Select **"Yes"** to set your cutter as the default printer before clicking **"Next"**.



The screenshot shows the 'Add Printer Wizard' dialog box with the title 'Add Printer Wizard'. The main heading is 'Name Your Printer' with a sub-heading 'You must assign a name to this printer.' and a printer icon. The text reads: 'Type a name for this printer. Because some programs do not support printer and server name combinations of more than 31 characters, it is best to keep the name as short as possible.' Below this is a text input field labeled 'Printer name:' containing the text 'Jagur II-132', which is circled in red. Underneath is the question 'Do you want to use this printer as the default printer?' with two radio buttons: 'Yes' (which is selected and circled in red) and 'No'. At the bottom are three buttons: '< Back', 'Next >' (highlighted in yellow), and 'Cancel'.

Step 9-2. Select **"Replace existing driver"** and click **"Next"**.



The screenshot shows the 'Add Printer Wizard' dialog box with the title 'Add Printer Wizard'. The main heading is 'Use Existing Driver' with a sub-heading 'A driver is already installed for this printer. You can use or replace the existing driver.' and a printer icon. The text reads: 'GCC JaguarII 132 (Cutter)'. Below this is the question 'Do you want to keep the existing driver or use the new one?' with two radio buttons: 'Keep existing driver (recommended)' and 'Replace existing driver' (which is selected and circled in red). At the bottom are three buttons: '< Back', 'Next >' (circled in red), and 'Cancel'.

Step 10. Select "No" not to print a test page. Then, click "**Next**" to go to next step.



Step 11. Congratulations. You have completed the installation of your GCC cutter. Click "**Finish**".

